



# C B ENVIRONMENTAL LTD

*Don't just waste it!*

A part of the C B Environmental Group

## Annual Report 2025



Prepared for PAS 402:2025 Waste Resource  
Management – Specification for Performance Reporting  
(1<sup>st</sup> Jan 2025 to 31<sup>st</sup> December 2025)

Author: AK Gustafsson  
Reviewed: January 2026  
Authorised: Leon Gobourn, Managing Director

## Contents

	Page
Foreword	
1 Scope of Operations	4
2 Client Relationship	8
3 Impacts and Risks	8
4 Operational Management	9
5 Competence	12
6 Legal and Other Requirements	13
7 Corrective, Preventive and Improvement Actions	13
8 Performance Review	14
Appendix	

## Foreword

C B Environmental Ltd. is a family-run business employing 17 staff and specialising in recycling and responsible waste disposal. Incorporated in 1998, following the successful tendering for Ceredigion County Council's Waste Transfer Station in Aberystwyth, C B Environmental Ltd. is head-quartered in Capel Bangor near Aberystwyth and is sister company to Clarach Bay Services Ltd (CBS) which has operated waste management and recycling services in the mid Wales area since 1987.

Recognising the need for expansion, in 2005 the company purchased a plot of land adjacent to the Aberystwyth Civic Amenity Site and Glanyrafon Waste Transfer Station for the development of a Materials Recycling Facility. In 2007 the Rheidol Recycling Park received its licence as a Household, Commercial and Industrial Waste Transfer Station with Treatment and Asbestos Storage and has continued to increase its throughput annually. Construction continues on site as development of the company's recycling and reprocessing activities expand resulting in the need to update the existing licence in 2014. Not only does the new permit allow waste operations to be carried out within the full boundaries of the site but also included are the additional activities associated with metal recycling, recovery of aggregates from inert waste and the depollution and dismantling of end of life vehicles.

2010 saw the formalisation of the company's quality management through its accreditation for ISO 9001 and in the same year the company became an affiliated organisation with the Chartered Institute for Wastes Management.

C B Environmental Ltd is aware of its impacts on the environment and is structuring its Environmental Management System with regard to legislative requirements and through certification according to the Green Dragon EMS Standard. The company is committed to continually improving its environmental, health & safety and quality aspects of its waste activities by operating to the clauses laid out in PAS 402:2025.

This report has been reviewed by Leon Gobourn, Operations Director of C B Environmental Ltd.

Signed:

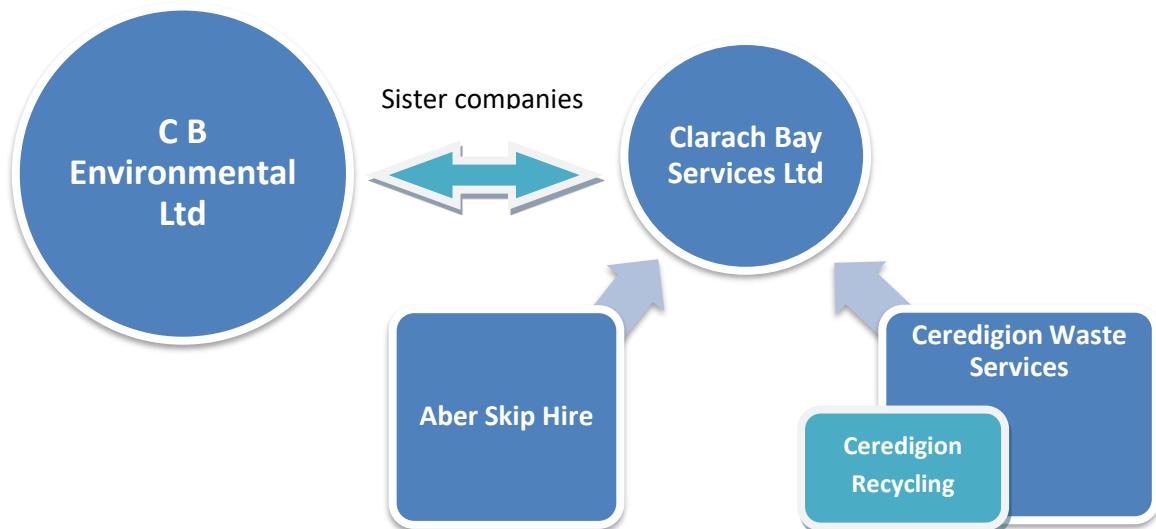


Date: 29/01/2026

## 1. Scope of Operations

C B Environmental Ltd is a family run business with over 25 years of experience in the industry, specialising in the recycling and responsible disposal of waste. Along with sister company Clarach Bay Services Ltd, which trades as Aber Skip Hire and Ceredigion Waste Services, the 2 companies informally make up the CB Environmental Group (see Figure 1) which provides a 'one stop' waste and recycling collection and disposal/recovery service.

**Figure 1.** C B Environmental Group



C B Environmental Ltd owns Rheidol Recycling Park (RRP), a waste transfer station on the Glanyrafon Industrial Estate, Aberystwyth with planning approval (A041199) and operating under a waste permit (EPR/QP3198FU – see Appendix) in line with the Environmental Permitting (England and Wales) Regulations 2010. The company also operates the local civic amenity site (EPR/NP3998FA – see Appendix) on behalf of Ceredigion County Council.

All wastes received at the sites are sorted and segregated through both mechanical and manual processes; wastes from the civic amenity site are brought to Rheidol Recycling Park for further treatment or dispatched directly to appropriate licensed facilities. From Rheidol Recycling Park segregated materials are dispatched to recycling and Energy from Waste facilities as well as inert wastes being recovered on site in line with a documented quality protocol. The only materials we are unable to provide a recovery option for is asbestos which is taken to a permitted hazardous waste landfill.

For the purposes of this PAS 402 report the operations at Rheidol Recycling Park are used since the tonnages of the various wastes removed from the civic amenity site are captured on the RRP weighbridge system.

Table 1, below, describes the permitted waste types and limits on waste activities as stated in the permit for Rheidol Recycling Park; the maximum through put is 25,000 tonnes annually.

**Table 1 - Permitted activities and limits at Rheidol Recycling Park**

Table S1.1 activities		
Activity reference	Description of activities for waste operations	Limits of activities
<b>A1 - Vehicle depollution and dismantling activity</b>	<p><b>R4:</b> Recycling/reclamation of metals and metal compounds</p> <p><b>R5:</b> Recycling/reclamation of other organic materials</p> <p><b>R13:</b> Storage of wastes pending any of the operations numbered R1 to R12 (excluding temporary storage, pending collection, on the site where it is produced)</p> <p><b>D15:</b> Storage pending any of the operations numbered D1 to D14 (excluding temporary storage, pending collection, on the site where it is produced)</p>	<p>Treatment consisting only of:</p> <ul style="list-style-type: none"> <li>- manual depollution of waste motor vehicles</li> <li>- sorting</li> <li>- separation</li> <li>- baling</li> <li>- compacting</li> <li>- cutting using hand-held (manual) equipment only</li> </ul> <p>of waste into different components for recovery.</p> <p>All wastes shall be treated on an impermeable surface with a sealed drainage system.</p> <p>Uncontaminated plastic, glass and ferrous and non-ferrous metal wastes arising from the treatment of end-of-life vehicles shall be stored on hard standing or an impermeable surface with sealed drainage system.</p> <p>No more than 50 tonnes of intact waste vehicle tyres (waste code 16 01 03) shall be stored at the site.</p> <p>The maximum quantity of hazardous waste that can be stored at the site (excluding un-depolluted end of life vehicles pending submission to manual de-pollution and/or hazardous waste electronic and electrical equipment pending submission to manual repair, refurbishment or depollution) for recovery or disposal, shall not exceed 50 tonnes in total at any one time.</p> <p>Waste types as set out in table S2.1</p>
<b>A2 - Metal recycling activity</b>	<p><b>R4:</b> Recycling/reclamation of metals and metal compounds</p> <p><b>R13:</b> Storage of wastes pending any of the operations numbered R1 to R12 (excluding temporary storage, pending collection, on the site where it is produced)</p>	<p>Treatment consisting of:</p> <ul style="list-style-type: none"> <li>- sorting</li> <li>- separation</li> <li>- grading</li> <li>- shearing</li> <li>- baling</li> <li>- compaction</li> <li>- granulating of cables, and</li> <li>- cutting using hand-held (manual) equipment only, of ferrous metals or alloys and non-ferrous metals into different components for recovery.</li> </ul> <p>There shall be no treatment of lead acid batteries, other than sorting and separating from other wastes.</p> <p>All wastes shall be treated on an impermeable surface with sealed drainage.</p> <p>Uncontaminated ferrous metal wastes or alloys and uncontaminated non-ferrous metal wastes shall be stored on hard standing or an impermeable surface.</p>

Activity reference	Description of activities for waste operations	Limits of activities
<b>A2 - Metal recycling activity (cont)</b>		<p>All other wastes shall be stored on an impermeable surface with sealed drainage system.</p> <p>Lead acid batteries shall be stored in containers with an impermeable, acid resistant base and a cover to prevent ingress of water.</p> <p>The maximum quantity of hazardous waste that can be stored at the site (excluding un-depolluted end of life vehicles pending submission to manual de-pollution and/or hazardous waste electronic and electrical equipment pending submission to manual repair, refurbishment or depollution), for recovery or disposal, shall not exceed 50 tonnes in total at any one time.</p> <p>Waste types as set out in table S2.2</p>
<b>A3 - Waste wood treatment activity</b>	<p><b>R3:</b> Recycling or reclamation of organic substances which are not used as solvents</p> <p><b>R13:</b> Storage of wastes pending the operation numbered R3</p>	<p>Treatment consisting only of:</p> <ul style="list-style-type: none"> <li>- sorting</li> <li>- separation</li> <li>- cutting</li> <li>- pulverising</li> <li>- shredding, and</li> <li>- chipping, of waste for recovery only.</li> </ul> <p>Waste shall be stored and treated on an impermeable surface with a sealed drainage system.</p> <p>Only clean, uncontaminated wood may be stored and treated on hard standing.</p> <p>Waste types as set out in table S2.3</p>
<b>A4 - Soil and aggregate processing activity</b>	<p><b>R3:</b> Recycling or reclamation of organic substances which are not used as solvents.</p> <p><b>R5:</b> Recycling or reclamation of other inorganic materials.</p> <p><b>R13:</b> Storage of wastes pending the operations numbered R3 and R5.</p>	<p>Treatment consisting only of:</p> <ul style="list-style-type: none"> <li>- sorting</li> <li>- separation</li> <li>- screening</li> <li>- crushing and</li> <li>- blending,</li> </ul> <p>of waste for recovery as a soil, soil substitute or aggregate.</p> <p>Waste shall be stored and treated on hard-standing or impermeable surface with sealed drainage system.</p> <p>Waste types as set out in table S2.4</p>
<b>A5 –Household, commercial and industrial waste transfer station activity</b>	<p><b>D14:</b> Repackaging prior to submission to any of the operations numbered D1 to 13</p> <p><b>D9:</b> Physico-chemical treatment not specified elsewhere in Annex IIA which results in final compounds or mixtures which are discarded by means of any of the operations numbered D1 to D8 and D10 to D12</p>	<p>Treatment consisting only of:</p> <ul style="list-style-type: none"> <li>- sorting</li> <li>- separation</li> <li>- bulking up</li> <li>- screening</li> <li>- baling</li> <li>- shredding</li> <li>- crushing</li> <li>- compaction,</li> </ul> <p>of non-hazardous waste into different components for recovery or disposal.</p>

Activity reference	Description of activities for waste operations	Limits of activities
<p><b>A5 –Household, commercial and industrial waste transfer station activity (cont)</b></p>	<p><b>R3:</b> Recycling/reclamation of organic substances which are not used as solvents  <b>R4:</b> Recycling/reclamation of metals and metal compounds  <b>R5:</b> Recycling/reclamation of other inorganic materials  <b>D15:</b> Storage pending any of the operations numbered D1 to D14 (excluding temporary storage, pending collection, on the site where it is produced)  <b>R13:</b> Storage of wastes pending any of the operations numbered R1 to R12 (excluding temporary storage, pending collection, on the site where it is produced)</p>	<p>Treatment of hazardous waste limited to:</p> <ul style="list-style-type: none"> <li>- sorting</li> <li>- baling</li> <li>- bulking up</li> </ul> <p>for the purpose of onward transport only</p> <p>- crushing of fluorescent tubes</p> <p>Waste shall be stored and treated on an impermeable surface with a sealed drainage system.</p> <p>Asbestos waste shall be double bagged and stored within clearly identified, segregated, secure, lockable containers on an impermeable surface with sealed drainage system.</p> <p>No more than 10 tonnes per day of hazardous waste is to be treated at the site in total for recovery or disposal.</p> <p>No more than 50 tonnes per day of non-hazardous waste is to be treated at the site in total for disposal.</p> <p>No more than 75 tonnes per day of non-hazardous waste is to be treated at the site in total for recovery.</p> <p>Wastes containing polychlorinated biphenyls (PCBs) must be stored within a building equipped with suitable containment measures.</p> <p>The maximum quantity of asbestos waste stored at the site shall not exceed 10 tonnes.</p> <p>The maximum quantity of hazardous waste that can be stored at the site in total for recovery or disposal shall not exceed 50 tonnes at any one time.</p> <p>Waste types as set out in table S2.5</p>
<p><b>Discharge</b></p>	<p><b>Discharge of integral site drainage from the emission point indicated on the plan in Schedule 7 of this permit.</b></p>	<p>Drainage consisting solely of</p> <ul style="list-style-type: none"> <li>- clean, rainfall dependent drainage from areas of the site used in connection with the storage or treatment of waste, and</li> <li>- run-off from the processing of waste only, via suitable, well maintained interceptors.</li> </ul> <p>No visible oil or grease shall be present in the discharge.</p>

## 2. Client Relationships

C B Environmental Ltd. has a well-established client base within Aberystwyth and the surrounding areas. We accept waste on to our site from companies and individuals in accordance with our permit conditions and documented waste acceptance procedure.

Many of our customers arrive at our site unannounced and in this instance the weighbridge operator will determine if the wastes can or cannot be accepted, we also have a telephone facility whereby customers can call us in advance to discuss their particular requirements. We advise all new or potential customers on their legal requirements of 'Duty of Care' and the Waste Hierarchy and are happy to assist those who are unfamiliar with waste regulations on the documents that they are obliged to provide.

In order to encourage customers with the pre-treatment of their waste we offer a scale of gate fees for source segregated wastes e.g. if a client were to bring a load of source segregated wood we would charge at a lower rate per tonne than for a load that consisted of mixed wastes. We also offer detailed feedback to customers bringing in mixed waste in the form of a breakdown of material types and recycling rates through the use of Visual Inspection Report.

The range of recycled aggregates we produce takes into account the materials most commonly used by our customers but we are also able to cater for bespoke orders of crushing and grading to customer specification e.g. single size drainage stone. For deliveries, we also discuss access with our customers as we have a fleet of wagons of increasing capacities which allows us to reach the more difficult locations that other suppliers cannot.

For other outgoing materials e.g. plastics we ensure that the requirements of the customer, whether re-processors or brokers, are fully understood and we have ongoing communication with buyers, quality managers, etc. in order to maintain the standard of quality that we promise to deliver. We have established good, long-running working relationships with the clients that receive our materials which are based on good communication/feedback, consistency of materials and cost effective delivery/collections.

Since updating our waste permit at the end of 2014 we now have an authorised facility for End of Life vehicles and are able to issue DVLA Certificates of Destruction for the scrap cars that are brought to us by members of the public or commercial enterprises. We have regular dealings with several of the garages in the Aberystwyth area who drop off scrap vehicles at our site or call us to collect from their own premises and who then provide us with the log book or details of the registered keeper of the vehicle. Once we have issued the certificates the customer copies are posted out directly to the registered keeper thereby providing an administrative service that is of great convenience to both garages and registered keepers alike.

We operate under a Quality Management System in line with the requirements of ISO 9001:2015 which demonstrates our commitment to continually improving our services and customer satisfaction. We deal with any customer complaints verbally or if need be through our formal complaint and investigation procedure as stated within our Quality Procedure Manual. We are always happy to hear feedback from our customers and encourage response to our regular Customer Satisfaction Survey.

### 3. Impacts and Risks

C B Environmental Ltd. holds suitable liability insurance and employs an external accountant who has assisted in developing our internal Business Continuity Plan.

All Health and Safety matters are managed by the company with an IOSH qualified member of the administration team being responsible for maintaining our Health and Safety Management System. Health and Safety Policies; Risk Assessments and General Position Statements, etc. are contained within our Health and Safety Management System and are used to prepare control measures for the risks identified. These control measures are passed on to those that are, or could be, affected through various methods such as our on-site Staff Information Folder, toolbox talks and staff bulletins. Our Health and Safety Management System is reviewed annually or following any significant changes on site with additional risk assessments being carried out as and when required.

Emergency Procedures are in place detailing how unexpected and emergency situations such as fire, flood, spillage etc. have been planned for which all new staff are informed of as part of induction training.

C B Environmental Ltd has Quality Procedures in place including a manual is the means by which meets and where possible exceeds the requirements and expectations of our customers.

Our Quality Policy is fully and completely understood by our employees, and our procedures are implemented and maintained at all times. This Quality Procedures Manual is written in accordance with the requirements of ISO 9001:2015. All of the components of our Quality Management System will be periodically and systematically reviewed by both internal and external Quality Audit procedures.

The senior management team are responsible for the control of all matters relating to the implementation of these procedures and the assurance of quality is fundamental to all of the activities undertaken by C B Environmental Ltd. All personnel at every level in the Organisation's structure shall practise the procedures established and reflected in the Quality Procedures Manual.

The quality management system adopts a system process approach with an emphasis on risk based thinking ensuring potential problems are dealt with proactively with the intention of mitigating issues before they occur.

As a company, CB Environmental takes all environmental aspects serious and with the climate crisis being one of the biggest challenges of our time, CB Environmental aim to achieve net zero as an organisation from 2050. To achieve this ambitious aim, the company will make reducing carbon emissions integral to all business planning and decision-making processes with a Carbon Reduction Plan in place, completed in accordance with PPN 06/21 and associated guidance and reporting standard for Carbon Reduction Plans.

The management team and site administrator are qualified through CIWM/WAMITAB to ensure continuity of technical competence and we work closely with Natural Resources Wales to maintain compliance with our environmental permit. Our Environmental Management System is externally audited and certified through Green Dragon EMS accreditation which assists us further in controlling and reducing the environmental aspects and impacts associated with our activities.

## 4. Operational Management

C B Environmental Ltd recognises the importance of quality management to its business and its customers and has an externally accredited Quality Management System (QMS) in line with ISO 9001:2015. All aspects of the company's QMS including: Responsibility, Authority & Communication (see figure 2); Planning, Provision of Resources, etc. are internally audited and the findings of the audits are reported to senior management at routine Quality Management Review meetings.

C B Environmental's Senior Management team commits the organisation to addressing its impacts on the environment and to develop and maintain an Environmental Management System (EMS) by applying the Key Principles of the Green Dragon Environmental Standard.

Overall responsibility for environmental issues remains with the Senior Management however an 'Environmental Champion' is appointed and who is responsible for environmental management.

The responsibilities of the 'Environmental Champion' include:

- a) implementing and maintaining the EMS;
- b) keeping the Environmental Policy up to date;
- c) co-ordinating environmental improvements;
- d) monitoring environmental performance and competence;
- e) communicating on all environmental issues, both internal and external;
- f) keeping staff aware of environmental responsibilities, commitments, roles, authorities and environmental performance;
- g) reporting to senior management on the organisation's environmental performance and the effectiveness of its EMS

Senior management shall

- ensure that resources are made available to permit the effective implementation of the operation of the EMS and QMS
- commit to a full annual review of the EMS and QMS
- demonstrate their commitment to the EMS and QMS to a Registered Assessor during both initial and reassessments of all standards relating to the EMS and QMS

As required under the terms of the waste management licence the waste operations onsite are directed by a Technically Competent Manager (with certified Continuing Competence through WAMITAB) and has a site attendance of at least 30% of operational hours per week.

For incoming transfers of waste we follow our Waste Acceptance Procedure and ensure that appropriate Duty of Care measures are applied whenever possible applying the Waste Operations and Additional Control Measures in place, and that staff are notified to supervise customers tipping their waste.

Recovery of aggregates from inert wastes is carried out according to a quality protocol following WRAP guidelines so that waste regulations no longer apply to the materials produced. Our weighbridge is used for public weighing and is routinely maintained and calibrated in line with the Weights and Measures Act 1985.

Where contractors are required to work on site the company's Management of Contractors Policy applies including the use of risk assessments and Hot Work permits to be issued by CB Environmental.

All wastes generated by the company are recycled, stored, handled and disposed of in line with the waste hierarchy.

Daily inspections of site are undertaken in order to ensure the permitted storage tonnages are not exceeding the limits, with any non-conformities recorded and reported, with disposal arranged within timely manner to ensure CB Environmental complies with regulations and legislations.

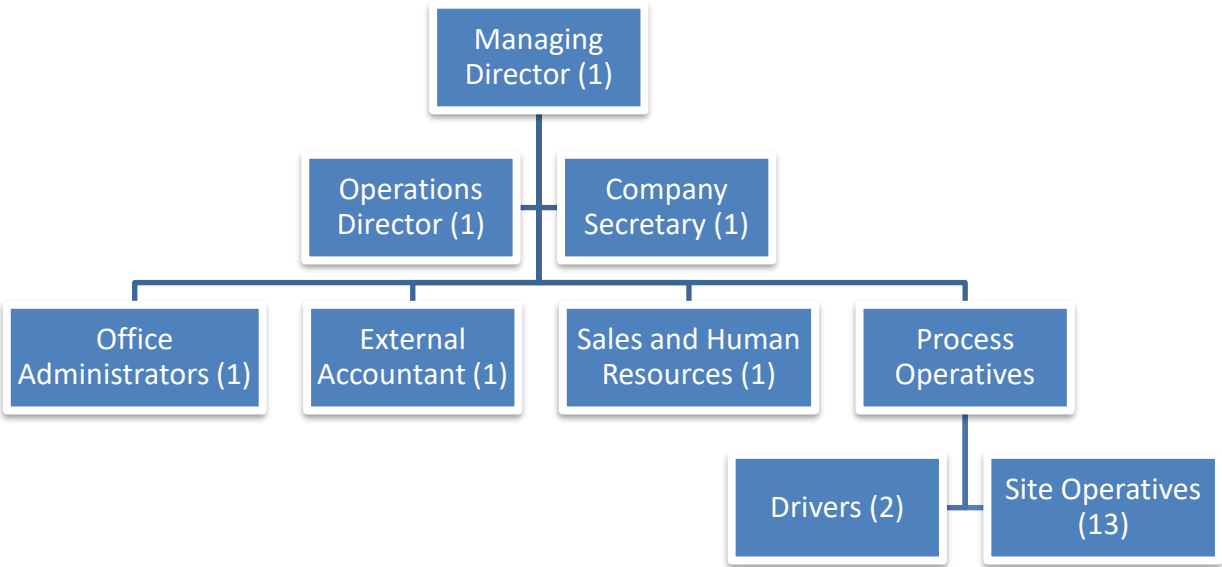
CB Environmental emphasises recycling of own waste produced, ensuring all waste disposed of correctly by adopting the waste hierarchy (reduce, reuse, recycle) to minimize environmental impact, cut costs, and comply with legal "duty of care" regulations. It includes a structured approach: assessing waste types, setting reduction goals, training staff, and implementing proper, segregated disposal.

CB Environmental manages risks (risk should be read as including both threats and opportunity), effectively and in a consistent framework in all aspects of its business including planning, delivering, operating and overseeing programmes and performance. The company have developed and encouraged a collaborative culture of well-informed risk-based decision making.

Makes risk management a part of strategic tactical and operational decision making such that whenever there are risks that could significantly affect company operations, programmes and projects, resources are deployed proportional to these risks.

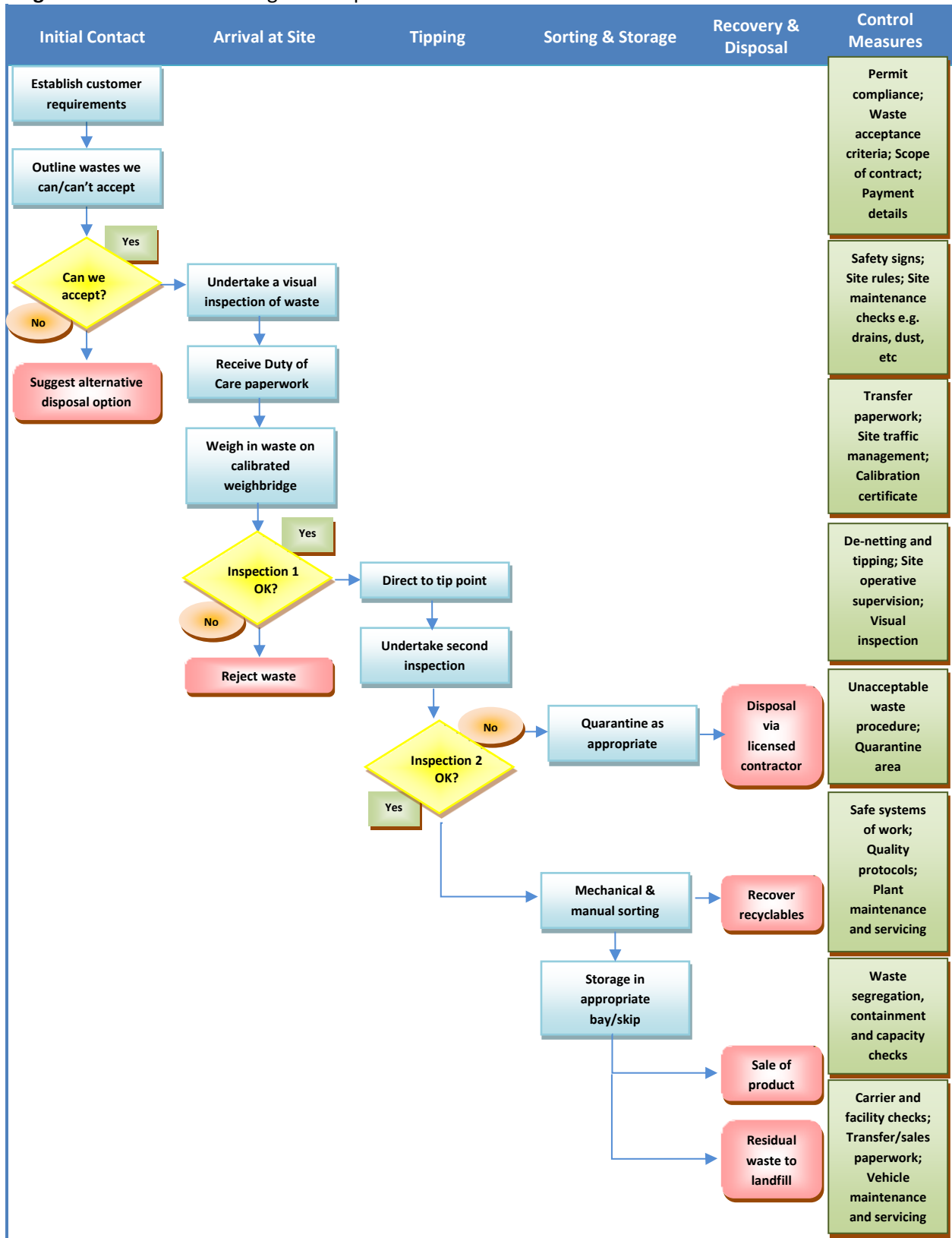
- Maintain a current risk and tolerance statement, communicates this risk statement across the company, and make decisions consistent with that statement
- Establish and maintain company procedures, practices and processes to ensure compliance with applicable standards and contractual provisions and remain consistent
- Provide clearly defined and documented accountabilities for risk management, requiring involvement from all members of the company, which ensure risks are being managed at the lowest level at which the company director has the authority, responsibility and resources to take effective action
- Ensure risks are managed in an integrated way across all levels of the organisation covering the key interdependencies i.e. strategic, programme, project and operational risk
- Ensure effective Risk Based assurance arrangements are in place to monitor the effectiveness of the risk management processes on a routine basis via the control framework
- Develop and maintain a core competency in risk management and has a robust continuous improvement and learning culture that learns from internal and external experience, assesses the performance against high standards and supports personnel growth and development.
- Maintain reviews and update of risks facing the business and how they are being mitigated and ensure that these are visible at the highest levels in the company
- Incorporate credible risks in the Company Plan and all significant planning efforts.
- Benchmark our risk management policies and procedures against recognised standards, good practices, and guidelines whilst ensuring they incorporate lessons learnt from inside and outside of the business

**Figure 2.** C B Environmental Ltd Organisation Structure



We have developed internal operational control systems (see Figure 3, following) over the 27 years that we have been operating waste transfer stations (both Rheidol Recycling Park and Glanyrafon Waste Transfer Station, on behalf of Ceredigion County Council). These enable us to effectively fulfil our legal and licensing obligations and capture the necessary data for reporting requirements.

**Figure 3.** Flowchart showing waste operations and additional control measures



Our weighbridge is used for public weighing and is routinely maintained and calibrated in line with the Weights and Measures Act 1985. Being Scrap Metal Dealers we are licensed under the Scrap Metal Dealers Act 2013 and have a separate set of documented procedures for purchasing scrap either from commercial or domestic sources.

Where there is to be more than one transfer of waste we ensure that appropriate Duty of Care measures are applied; this entails individual records of the wastes with their appropriate EWC code and weight and an accompanying Waste Transfer Note, Hazardous Waste Consignment Note or appropriate 'season ticket' as described in the Environmental Protection Act 1990 Section 34 Annex C.

All of our waste operations are monitored throughout each day which enables us to have a clear understanding of how waste being received is handled, stored and dispatched. Through monitoring of the site and the weighbridge management system we are able to ensure compliance with the capacity conditions of our permit.

We have suitable and sufficient waste containment bays and containers that are used within the site permit boundaries. All wastes are held on site in compliance with our permit conditions and for no longer than specified time limits. We control hazardous wastes in a manner that is proportionate to the particular hazards and risks, where required we store hazardous waste in purpose built containment e.g. asbestos in a marked, enclosed, lockable skip. Any wastes our organization generates are, where possible, recycled and are stored, handled and disposed of in line with the waste hierarchy and Duty of Care requirements.

Operations onsite have been evaluated to ensure the responsible management of inputs, outputs and processes in order to minimise risks to the environment and human health, and to maximise waste management efficiency on site. Precautionary site rules (max. speed, use of PPE, etc.) are clearly signed and visible to site visitors with additional signs and safety barriers where necessary.



The site maintenance program revolves around weekly and monthly checks in addition to daily observation and action. Weekly checks are carried out according to a tick box checklist, the outcome of which is recorded in the site diary; for monthly checks records are maintained separately e.g. fire alarm tests are recorded in the Fire Alarm System Log.

A range of appropriate vehicles, plant and machinery is used for moving and processing waste on site. Processing operations include screening, bailing, crushing and shredding as well as manual sorting. Vehicles are maintained on a scheduled 6-week rolling basis or as required, whilst plant and machinery is maintained in accordance to manufacturers' specifications and legal requirements e.g. LOLER. Vehicle Defect Report Sheets and Heavy Plant Pre-use Check Sheets are in use to document maintenance issues during daily checks or as they arise; heavy plant maintenance and repairs are conducted in-house and Defect Report Sheets are passed on to third party mechanics.



## 5. Competence

We have technically competent and qualified staff working throughout our operations. Jobs are analysed to identify the training needs of all employees and activities. A primary source of information is the appropriate risk assessments relating to the individual and the activity. Suitable training is identified and recorded on our Training Needs Analysis matrix ensuring that appropriate training is provided to meet the needs of all individuals. This matrix is reviewed annually and updated in response to new legislation or the need to ensure satisfactory performance.

We have a comprehensive induction programme which gives specific training relating to the needs of the individual and the activities to be undertaken, this is accompanied by a mentoring programme with a competent member of staff. Staff bulletins and daily contact enable us to update our workforce and records of training and valid certificates are kept for each staff member.

Table 2, following, shows our 2025 Competency Matrix which summarises our Training Needs Analysis and the individual Staff Training Records.

**Table 2.** 2025 Competency Matrix

	Management	Site Operatives	Drivers	Office/ Sales
Waste Manager	1E			1E
Health & Safety	1M	10M/E	4M/E	2M/E
First Aid	1E	1E	4E	1E
Emergency Procedures	1M	10M	4M	2M
Weighbridge Operations				2E
Customer Service				2E
Driver CPC	1E		4E	
Forklifts	1E	9E	4E	1E
Material Handler	1E	4E	4E	
Wheeled loading shovel	1E	10E	4E	1E

*E = External training      M = Mentoring/In-house training*

## 6. Corrective, preventive and improvement actions

We keep a register of applicable legislation which details the specific relevance of the legislation to C B Environmental Ltd and is reviewed annually. We maintain the register in house with the advice from third parties through audits and inspections, e-mail updates and regular liaison with regulators; the register is then updated as required. In line with the requirements of our Green Dragon accreditation we undertake legal compliance evaluations at regular intervals in accordance with the applicable health, safety and environmental laws that are set out in the Legal Register.

Through regular monitoring and routine site inspections of all activities we are able to respond effectively to any non-compliance and introduce suitable remediation measures; all significant findings are recorded in the site diary and if necessary the management may be notified through the use of our Management Information Report forms.

Any non-conforming incoming waste or outgoing materials are inspected by a site operative who takes appropriate action to reject or isolate the non-conformity (by moving the waste to an appropriate storage bay/container) and informs the Technically Competent Manager. The details of the non-conformance are documented using a Non-conformance Record Sheet and following further investigation onsite the non-conformance may be: reintroduced at an appropriate point in the processing operations; returned to an appropriate feedstock pile for processing into an alternative product or disposed of appropriately. The nature of the non-conformance, the action taken and any preventative measures to be taken are documented and raised during the quarterly Quality Management Review meeting.

Likewise, if any employee or interested stakeholder raises a concern, then the issue will be investigated to determine the root cause of the problem before corrective and preventive actions are introduced to remedy the problem. These concerns may be documented using our Complaints and Investigation procedure as stated and audited through our Quality Management System, any actions will be monitored to ensure that they are successful and, if not, other solutions will be applied.

## 7. Performance review

We have identified key performance indicators to include the amount of waste being recovered and sent to landfill for the activities identified in clauses 5 to 12 of PAS 402:2025 and undertake continual review of these activities; we also carry out environmental monitoring as part of our Green Dragon accreditation.

We have a continual improvement plan that we work to and in the coming 12 months we intend to:

- work in conjunction with Aber Heat & Power Ltd on the running of the biomass burner and utilise the heat produced to dry certain waste streams prior to dispatch;
- increase waste storage and processing capabilities in preparation for the forthcoming changes with regards to the Workplace Recycling legislation;
- baling operations recommenced at Rheidol Recycling Park;
- complete an overhaul our Health and Safety system and apply for a variation of the sites environmental permit;
- undertake a review of our legal compliance, and
- carry out re-certification for ISO 9001 and the Green Dragon EMS Standard

The incineration of Refuse Derived Fuel (RDF) for energy generation is an R1 recovery activity according to the European Communities Directive 2008/98/EC on waste [4] Article 3(15). This approach results in very little of the waste leaving our site taking a disposal route and, in fact, the only waste leaving the site for disposal at landfill is asbestos which is outside the scope of this report. For the purpose of this report 'domestic upholstered seating which may contain POPs' is stated as going down a disposal route. This is because there is a requirement for disposal by incineration for this waste stream in order to breakdown the 'forever chemicals' that the foam and fabrics may have been treated with.

The following tables relate to the performance of our waste management operations and are described as follows:

Table 3 summarises our performance regarding waste recovery/disposal for outgoing loads showing an average *Landfill Diversion Rate (LDR)* of 99.7% with and *Overall Material Recovery Rate (OMR)* of 99.7% over the 4 consecutive quarters of 2025.

Note: C B Environmental Ltd carries out aggregate recovery from inert wastes (including bituminous materials) according to a formal quality protocol, through this approach the value of the materials is legally recovered and as such the products are saleable. In addition to the recycled aggregates produced on site a number of other quality protocol recycled aggregates are bought in for resale (130.92t during 2025). Since waste regulations still apply until final use then the tonnages of all of the recycled aggregates are included in this report. For 2025 recycled aggregates account for 2,013.72 tonnes of the outgoing total. Fine inert waste that is produced during the production of recycled aggregates is used at local farms which hold a suitable U1 exemption and allows the restricted use of certain wastes to replace virgin materials, this then also counts as a recovery operation.

Table 2 summarises our annual recovery and disposal tonnages for 2025, this includes tonnages for wastes brought to the site already segregated as well as those recovered on site from the processing of *Mixed Construction and Demolition Waste*.

Note: Tonnages for individual waste streams recovered through onsite segregation are calculated using the total tonnage per quarter with a factor based on the average composition of the individual waste streams from the visual inspection of mixed loads as they were tipped and sorted. Visual inspections give the composition of mixed loads by volume which was then converted into a value for mass using the densities supplied in PAS 402.

Note: Unprocessed wastes includes *Construction and Demolition Waste* and the *Mixed Municipal Waste* which will be processed onsite but not the *Mixed Municipal Waste* that will be transferred to another facility for the preparation of RDF. Processed Wastes includes those materials which have been separated, shredded and/or baled etc. onsite ready for dispatch as well as the segregated wastes brought in and are already suitable for dispatch.

**Table 1 – Performance summary**

<b>Performance summary Total tonnes</b>	<b>Total tonnes</b>
Total material inputs this period	10199.01
Waste used/retained on site this period e.g. for engineering purposes	0.00
Waste remaining on site at end of this period (unprocessed)	218.11
Waste remaining on site at end of this period (processed)	205.40
Total waste remaining on site at end of this period	423.515
Waste sent offsite for reuse/repair this period	52.69
Waste sent offsite for recycling this period	3152.78
Waste sent offsite for energy recovery this period	4530.02
Qualifying fines	7.88
Non-qualifying fines	0.00
Materials sent offsite as non-waste this period e.g. end of waste	2013.72
Waste sent off for disposal (incineration without energy recovery)	0.00
Waste sent off for disposal to landfill	18.40
Total materials sent off site this period	9775.49
<i>NOTE 2 Waste sent offsite for other recovery includes landspreading and biogenic wastes that do not meet composting standards</i>	
<i>NOTE 3 'Period', in Table 1, refers to the reporting period (annual).</i>	

*NOTE 4 Attention is drawn to The Landfill Tax (Qualifying Material) Order 2011 (SI 2011 No 1017) [6]; and the Landfill Tax (Qualifying Fines) Order 2015 [7].*

**Table 2 – Annual recovery and disposal tonnages**

Incoming LOW/EWC code(s) <sup>A</sup> and description (multiple	Incoming Tonnage	Outgoing LOW/ EWC recovery/disposal code and description	Outgoing Tonnage	Waste stream	Destination treatment description		
<b>Asbestos</b> - D15 Temporary storage of waste pending any of the operations numbered D1 to D14 (excluding temporary storage, pending collection, on the site where it is produced)	17 06 05	16.73					
			<b>Asbestos</b>	<b>17 06 05</b>	23.84	Landfill Cover	<b>Swindon</b> - D05.03 Hazardous waste landfill
<b>Asbestos (Skip)</b> - D15 Temporary storage of waste pending any of the operations numbered D1 to D14 (excluding temporary storage, pending collection, on the site where it is produced)	17 06 05	0					
<b>Bulky Waste</b> - R13 Temporary storage of wastes pending any other recovery operation (excluding temporary storage, pending collection, on the site where it is produced).	20 03 07	0					
<b>Bulky Waste (Skip)</b> - R13 Temporary storage of wastes pending any other recovery operation (excluding temporary storage, pending collection, on the site where it is produced).	20 03 07	0.00					
<b>Bulky Waste Containing POPs</b> - D15 Temporary storage of waste pending any of the operations numbered D1 to D14 (excluding temporary storage, pending collection, on the site where it is produced)	20 03 07	94.06	<b>Bulky Waste Containing POPs</b>	<b>20 03 07</b>	157.98	Energy Recovery	<b>Various locations UK</b> - D15 Temporary storage of waste pending any of the operations numbered D1 to D14 (excluding temporary storage, pending collection, on the site where it is produced)
<b>Bulky Waste Containing POPs (Skip)</b> - D15 Temporary storage of waste pending any of the operations numbered D1 to D14 (excluding temporary storage, pending collection, on the site where it is produced)	20 03 07	0.00					
<b>Cardboard</b> - R13 Temporary storage of wastes pending any other recovery operation (excluding temporary storage, pending collection, on the site where it is produced).	15 01 01	68.86	<b>Cardboard</b>	<b>15 01 01</b>	317.30	Recycle	<b>Powys</b> - R03.01.01 sorting waste Paper

<b>Cardboard (Skip)</b> - R13 Temporary storage of wastes pending any other recovery operation (excluding temporary storage, pending collection, on the site where it is produced).	<b>15 01 01</b>	102.33					
<b>Carpet</b> - R13 Temporary storage of wastes pending any other recovery operation (excluding temporary storage, pending collection, on the site where it is produced).	<b>20 01 11</b>	123.52					
<b>Carpet (Skip)</b> - R13 Temporary storage of wastes pending any other recovery operation (excluding temporary storage, pending collection, on the site where it is produced).	<b>20 01 11</b>	1.04	<b>Carpets</b>	<b>20 01 11</b>	168.46	Recycle	<b>Shropshire</b> - R13 Temporary storage of wastes pending any other recovery operation (excluding temporary storage, pending collection, on the site where it is produced)
<b>ELV</b> - R5: Recycling/reclamation of other organic materials R13: Storage of wastes pending any of the operations numbered R1 to R12 (excluding temporary storage, pending collection, on the site where it is produced) D15: Storage pending any of the operations numbered D1 to D14 (excluding temporary storage, pending collection, on the site where it is produced)	<b>16 01 04</b>	11.52					
<b>ELV (Skip)</b> - R5: Recycling/reclamation of other organic materials R13: Storage of wastes pending any of the operations numbered R1 to R12 (excluding temporary storage, pending collection, on the site where it is produced) D15: Storage pending any of the operations numbered D1 to D14 (excluding temporary storage, pending collection, on the site where it is produced)	<b>16 01 04</b>	0	<b>ELV Ferrous</b>	<b>16 01 17</b>	70.90	Recycle	<b>Various locations UK</b> - R04.02.03 Mechanical reprocessing of ferrous and non-ferrous metals
<b>Fluorescent Tubes</b> - R04.02.01 Mechanical reprocessing of WEEE	<b>20 01 21</b>	0.66					
<b>Fluorescent Tubes (Skip)</b> - R04.02.01 Mechanical reprocessing of WEEE	<b>20 01 21</b>	0	<b>Fluorescent Tubes</b>	<b>20 01 21</b>	0.28	Recycle	<b>Trafford</b> - R04.02.01 Mechanical reprocessing of WEEE

<b>Fridges</b> - R04.02.01 Mechanical reprocessing of WEEE	<b>20 01 23</b>	100.32	<b>Fridges</b>	<b>20 01 23</b>	109.18	Recycle	<b>Various locations UK</b> - R04.02.01 Mechanical reprocessing of WEEE
<b>Fridges (Skip)</b> - R04.02.01 Mechanical reprocessing of WEEE	<b>20 01 23</b>	0					
<b>Glass (Bottles and Jars)</b>	<b>15 01 07</b>	0	<b>Glass</b>	<b>15 01 07</b>	0.00	Recycle	<b>Ceredigion</b> - R13 Temporary storage of wastes pending any other recovery operation (excluding temporary storage, pending collection, on the site where it is produced)
<b>Glass (Bottles and Jars) (Skip)</b>	<b>15 01 07</b>	51.68					
<b>Green</b> - R13 Temporary storage of wastes pending any other recovery operation (excluding temporary storage, pending collection, on the site where it is produced).	<b>20 02 01</b>	1177	<b>Green Waste</b>	<b>20 02 01</b>	1078.60	Recycle	<b>Ceredigion</b> - R03.02.01 Open windrow composting (green waste)
<b>Green (Skip)</b> - R13 Temporary storage of wastes pending any other recovery operation (excluding temporary storage, pending collection, on the site where it is produced).	<b>20 02 01</b>	19.3					
<b>Bituminous material</b> - R05.06.02 Manufacture of building materials.	<b>17 03 02</b>	247.36	<b>Screened Inert/Fines</b>	<b>19 12 09</b>	0.00	Recycle	<b>Various locations UK</b> - R05 recovery of inorganic wastes
<b>Bituminous material (Skip)</b> - R05.06.02 Manufacture of building materials.	<b>17 03 02</b>	24.88					
<b>Inert</b> - R05.06.02 Manufacture of building materials.	<b>17 01 07</b>	1156.60					
<b>Inert (Skip)</b> - R05.06.02 Manufacture of building materials.	<b>17 01 07</b>	640.7					
<b>Inert/Spoil</b> - R13 Temporary storage of wastes pending any other recovery operation (excluding temporary storage, pending collection, on the site where it is produced).	<b>17 05 04</b>	380.4					
<b>Inert/Spoil (Skip)</b> - R13 Temporary storage of wastes pending any other recovery operation (excluding temporary storage, pending collection, on the site where it is produced).	<b>17 05 04</b>	64.62					

<b>Large Domestic Appliances (LDA)</b> - R13 Temporary storage of wastes pending any other recovery operation (excluding temporary storage, pending collection, on the site where it is produced).	<b>20 01 36</b>	72.12	<b>Large Domestic Appliances</b>	<b>20 01 36</b>	64.94	Recycle	<b>Bristol</b> - R04.02.01 Mechanical reprocessing of WEEE
<b>Large Domestic Appliances (LDA) (Skip)</b> - R13 Temporary storage of wastes pending any other recovery operation (excluding temporary storage, pending collection, on the site where it is produced).	<b>20 01 36</b>	0					
<b>Lead Acid Batteries</b> - R13 Temporary storage of wastes pending any other recovery operation (excluding temporary storage, pending collection, on the site where it is produced).	<b>20 01 33</b>	1.11	<b>Lead-Acid Batteries</b>	<b>20 01 33</b>	25.32	Recycle	<b>Blaenau Gwent</b> - R04.02.01 Mechanical reprocessing of WEEE
<b>Lead Acid Batteries (Skip)</b> - R13 Temporary storage of wastes pending any other recovery operation (excluding temporary storage, pending collection, on the site where it is produced).	<b>20 01 33</b>	0					
<b>Mattresses</b> - R13 Temporary storage of wastes pending any other recovery operation (excluding temporary storage, pending collection, on the site where it is produced).	<b>20 03 07</b>	46.16	<b>Mattresses</b>	<b>20 03 07</b>	63.56	Energy Recovery	<b>Shropshire</b> - R13 Temporary storage of wastes pending any other recovery operation (excluding temporary storage, pending collection, on the site where it is produced) / R01 Incineration of waste for use principally as a fuel or other means to generate energy
<b>Mattresses (Skip)</b> - R13 Temporary storage of wastes pending any other recovery operation (excluding temporary storage, pending collection, on the site where it is produced).	<b>20 03 07</b>	0.00					

<p><b>Mixed Municipal Waste</b> - D14: Repackaging prior to submission to any of the operations numbered D1 to 13</p> <p>D9: Physico-chemical treatment not specified elsewhere in Annex IIA which results in final compounds or mixtures which are discarded by means of any of the operations numbered D1 to D8 and D10 to D12</p> <p>R3: Recycling/reclamation of organic substances which are not used as solvents</p> <p>R4: Recycling/reclamation of metals and metal compounds</p> <p>R5: Recycling/reclamation of other inorganic materials</p> <p>D15: Storage pending any of the operations numbered D1 to D14 (excluding temporary storage, pending collection, on the site where it is produced)</p> <p>R13: Storage of wastes pending any of the operations numbered R1 to R12 (excluding temporary storage, pending collection, on the site where it is produced)</p>	<p><b>20 03 01</b></p>	<p>2224.57</p>	<p><b>Mixed Municipal Waste</b></p>	<p><b>20 03 01</b></p>	<p>1115.48</p>	<p>Energy Recovery</p>	<p><b>Flintshire - R13</b> Temporary storage of wastes pending any other recovery operation (excluding temporary storage, pending collection, on the site where it is produced) / R01 Incineration of waste for use principally as a fuel or other means to generate energy</p>
---	------------------------	----------------	-------------------------------------	------------------------	----------------	------------------------	---

<p><b>Mixed Municipal Waste (Skip)</b> - D14: Repackaging prior to submission to any of the operations numbered D1 to 13</p> <p>D9: Physico-chemical treatment not specified elsewhere in Annex IIA which results in final compounds or mixtures which are discarded by means of any of the operations numbered D1 to D8 and D10 to D12</p> <p>R3: Recycling/reclamation of organic substances which are not used as solvents</p> <p>R4: Recycling/reclamation of metals and metal compounds</p> <p>R5: Recycling/reclamation of other inorganic materials</p> <p>D15: Storage pending any of the operations numbered D1 to D14 (excluding temporary storage, pending collection, on the site where it is produced)</p> <p>R13: Storage of wastes pending any of the operations numbered R1 to R12 (excluding temporary storage, pending collection, on the site where it is produced)</p>	<p><b>20 03 01</b></p>	<p>505.29</p>					
--	------------------------	---------------	--	--	--	--	--

<p><b>Residual Mixed Waste</b> - D14: Repackaging prior to submission to any of the operations numbered D1 to 13</p> <p>D9: Physico-chemical treatment not specified elsewhere in Annex IIA which results in final compounds or mixtures which are discarded by means of any of the operations numbered D1 to D8 and D10 to D12</p> <p>R3: Recycling/reclamation of organic substances which are not used as solvents</p> <p>R4: Recycling/reclamation of metals and metal compounds</p> <p>R5: Recycling/reclamation of other inorganic materials</p> <p>D15: Storage pending any of the operations numbered D1 to D14 (excluding temporary storage, pending collection, on the site where it is produced)</p> <p>R13: Storage of wastes pending any of the operations numbered R1 to R12 (excluding temporary storage, pending collection, on the site where it is produced)</p>	<p><b>20 03 01</b></p>	<p>137.66</p>	<p><b>Residual Mixed Waste</b></p>	<p><b>19 12 12</b></p>	<p>1264.68</p>	<p>Energy Recovery</p>	<p><b>Neath Port Talbot -</b> R13 Temporary storage of wastes pending any other recovery operation (excluding temporary storage, pending collection, on the site where it is produced) / R01 Incineration of waste for use principally as a fuel or other means to generate energy</p>
--	------------------------	---------------	------------------------------------	------------------------	----------------	------------------------	--

<p><b>Residual Mixed Waste (Skip)</b> - D14: Repackaging prior to submission to any of the operations numbered D1 to 13</p> <p>D9: Physico-chemical treatment not specified elsewhere in Annex IIA which results in final compounds or mixtures which are discarded by means of any of the operations numbered D1 to D8 and D10 to D12</p> <p>R3: Recycling/reclamation of organic substances which are not used as solvents</p> <p>R4: Recycling/reclamation of metals and metal compounds</p> <p>R5: Recycling/reclamation of other inorganic materials</p> <p>D15: Storage pending any of the operations numbered D1 to D14 (excluding temporary storage, pending collection, on the site where it is produced)</p> <p>R13: Storage of wastes pending any of the operations numbered R1 to R12 (excluding temporary storage, pending collection, on the site where it is produced)</p>	20 03 01						
<p><b>Paint</b> - R13 Temporary storage of wastes pending any other recovery operation (excluding temporary storage, pending collection, on the site where it is produced).</p>	20 01 28	0.46	Paint (Non-Hazardous)	20 01 28	0.46	Recycle	Sandwell - R02 Solvent recovery
<p><b>Paint (Skip)</b> - R13 Temporary storage of wastes pending any other recovery operation (excluding temporary storage, pending collection, on the site where it is produced).</p>	20 01 28	0					
<p><b>Paper</b> - R13 Temporary storage of wastes pending any other recovery operation (excluding temporary storage, pending collection, on the site where it is produced).</p>	20 01 01	165.78	Paper	20 01 01	59.40	Recycle	Powys - R03.01.01 sorting waste Paper

<b>Paper (Skip)</b> - R13 Temporary storage of wastes pending any other recovery operation (excluding temporary storage, pending collection, on the site where it is produced).	<b>20 01 01</b>	24.44					
<b>Plasterboard</b> - R13 Temporary storage of wastes pending any other recovery operation (excluding temporary storage, pending collection, on the site where it is produced).	<b>17 08 02</b>	125.36					
<b>Plasterboard (Skip)</b> - R13 Temporary storage of wastes pending any other recovery operation (excluding temporary storage, pending collection, on the site where it is produced).	<b>17 08 02</b>	15.02	<b>Plasterboard</b>	<b>17 08 02</b>	127.90	Recycle	<b>Somerset</b> - R05.06.02 Manufacture of building materials
<b>Plastic Packaging</b> - R13 Temporary storage of wastes pending any other recovery operation (excluding temporary storage, pending collection, on the site where it is produced).	<b>15 01 02</b>	0					
<b>Plastic Packaging (Skip)</b> - R13 Temporary storage of wastes pending any other recovery operation (excluding temporary storage, pending collection, on the site where it is produced).	<b>15 01 02</b>	0					
<b>Agricultural Plastic</b> - R13 Temporary storage of wastes pending any other recovery operation (excluding temporary storage, pending collection, on the site where it is produced).	<b>02 01 04</b>	41.66					
<b>Agricultural Plastic (Skip)</b> -R13 Temporary storage of wastes pending any other recovery operation (excluding temporary storage, pending collection, on the site where it is produced).	<b>02 01 04</b>	0					
			<b>Plastic - Mixed</b>	<b>20 01 39</b>	109.42	Recycle	<b>Powys</b> - R13 Temporary storage of wastes pending any other recovery operation (excluding temporary storage, pending collection, on the site where it is produced)

<b>Plastics</b> - R13 Temporary storage of wastes pending any other recovery operation (excluding temporary storage, pending collection, on the site where it is produced).	<b>20 01 39</b>	88.52					
<b>Plastics (Skip)</b> - R13 Temporary storage of wastes pending any other recovery operation (excluding temporary storage, pending collection, on the site where it is produced).	<b>20 01 39</b>	0					
<b>Plate Glass</b> - R13 Temporary storage of wastes pending any other recovery operation (excluding temporary storage, pending collection, on the site where it is produced).	<b>20 01 02</b>	22.21	<b>Plate Glass</b>	<b>20 01 02</b>	26.20	Recycle	<b>Ceredigion</b> - R13 Temporary storage of wastes pending any other recovery operation (excluding temporary storage, pending collection, on the site where it is produced)
<b>Plate Glass (Skip)</b> - R13 Temporary storage of wastes pending any other recovery operation (excluding temporary storage, pending collection, on the site where it is produced).	<b>20 01 02</b>	76.38					
<b>PVC</b> - R13 Temporary storage of wastes pending any other recovery operation (excluding temporary storage, pending collection, on the site where it is produced).	<b>17 02 03</b>	5.12	<b>PVC</b>	<b>17 02 03</b>	9.02	Recycle	<b>Neath Port Talbot</b> - R13 Temporary storage of wastes pending any other recovery operation (excluding temporary storage, pending collection, on the site where it is produced)
<b>PVC (Skip)</b> - R13 Temporary storage of wastes pending any other recovery operation (excluding temporary storage, pending collection, on the site where it is produced).	<b>17 02 03</b>	0					
<b>Scrap (No Vat)</b> - R4: Recycling/reclamation of metals and metal compounds R13: Storage of wastes pending any of the operations numbered R1 to R12 (excluding temporary storage, pending collection, on the site where it is produced)	<b>20 01 40</b> <b>17 04 07</b>	489.25	<b>Ferrous and Non-Ferrous Metals</b>	<b>19 12 02</b>	775.70	Recycle	<b>Various locations UK</b> - R04.02.03 Mechanical reprocessing of ferrous and non-ferrous metals

<p><b>Scrap (No Vat) (Skip)</b> - R4: Recycling/reclamation of metals and metal compounds R13: Storage of wastes pending any of the operations numbered R1 to R12 (excluding temporary storage, pending collection, on the site where it is produced)</p>	<p><b>20 01 40</b> <b>17 04 07</b></p>	56.6					
<p><b>Scrap (With VAT)</b> - R4: Recycling/reclamation of metals and metal compounds R13: Storage of wastes pending any of the operations numbered R1 to R12 (excluding temporary storage, pending collection, on the site where it is produced)</p>	<p><b>20 01 40</b> <b>17 04 07</b></p>	0.1	<p><b>Ferrous and Non-Ferrous Metals</b></p>	<p><b>19 12 03</b></p>	72.94	Recycle	<p><b>Various locations UK - R04.02.03</b> Mechanical reprocessing of ferrous and non-ferrous metals</p>
<p><b>Scrap (With VAT) (Skip)</b> - R4: Recycling/reclamation of metals and metal compounds R13: Storage of wastes pending any of the operations numbered R1 to R12 (excluding temporary storage, pending collection, on the site where it is produced)</p>	<p><b>20 01 40</b> <b>17 04 07</b></p>	51.64					
<p><b>Soil and Stones</b> - R13 Temporary storage of wastes pending any other recovery operation (excluding temporary storage, pending collection, on the site where it is produced).</p> <p><b>Soil and Stones (Skip)</b> - R13 Temporary storage of wastes pending any other recovery operation (excluding temporary storage, pending collection, on the site where it is produced).</p>	<p><b>20 02 02</b></p> <p><b>20 02 02</b></p>	<p>271.64</p> <p>264.72</p>					
<p><b>Textiles</b> - R13 Temporary storage of wastes pending any other recovery operation (excluding temporary storage, pending collection, on the site where it is produced).</p> <p><b>Textiles (Skip)</b> - R13 Temporary storage of wastes pending any other recovery operation (excluding temporary storage, pending collection, on the site where it is produced).</p>	<p><b>20 01 10</b></p> <p><b>20 01 10</b></p>	<p>52.89</p> <p>0</p>	<p><b>Textiles</b></p>	<p><b>20 01 10</b></p>	52.69	Reuse	<p><b>Shropshire</b> - R3.10 Repair/refurbishment/cleaning etc for re-use (eg clothing, furniture, wood, etc)</p>

<b>Tyres</b> - R13 Temporary storage of wastes pending any other recovery operation (excluding temporary storage, pending collection, on the site where it is produced).	<b>16 01 03</b>	0.26	<b>Tyres</b>	<b>16 01 03</b>	0.00	Recycle	<b>Carmarthenshire</b> - R13 Temporary storage of wastes pending any other recovery operation (excluding temporary storage, pending collection, on the site where it is produced).
<b>Tyres (Skip)</b> - R13 Temporary storage of wastes pending any other recovery operation (excluding temporary storage, pending collection, on the site where it is produced).	<b>16 01 03</b>	0.00					
<b>Waste Oil</b> - R13 Temporary storage of wastes pending any other recovery operation (excluding temporary storage, pending collection, on the site where it is produced).	<b>13 02 05</b>	11.53	<b>Mixed Fuel</b>	<b>13 07 03</b>	0.85	Energy Recovery	<b>Manchester</b> - R1* Use principally as a fuel or other means to generate energy
<b>Waste Oil (Skip)</b> - R13 Temporary storage of wastes pending any other recovery operation (excluding temporary storage, pending collection, on the site where it is produced).	<b>13 02 05</b>	0					
<b>WEEE (SDA + CRT, TVs)</b> - R13 Temporary storage of wastes pending any other recovery operation (excluding temporary storage, pending collection, on the site where it is produced).	<b>20 01 35</b>	177.16	<b>Small Domestic Appliances</b>	<b>20 01 35</b>	163.04	Recycle	<b>Various locations UK</b> - R04.02.01 Mechanical reprocessing of WEEE
<b>WEEE (SDA + CRT, TVs) (Skip)</b> - R13 Temporary storage of wastes pending any other recovery operation (excluding temporary storage, pending collection, on the site where it is produced).	<b>20 01 35</b>	2.08					
<b>Wood</b> - R3: Recycling or reclamation of organic substances which are not used as solvents R13: Storage of wastes pending the operation numbered R3	<b>20 01 38</b>	693.39	<b>Mixed Waste Wood</b>	<b>19 12 07</b>	1927.47	Energy Recovery	<b>Various locations UK</b> - R01 Incineration of waste for use principally as a fuel or other means to generate energy
<b>Wood (Skip)</b> - R3: Recycling or reclamation of organic substances which are not used as solvents R13: Storage of wastes pending the operation numbered R3	<b>20 01 38</b>	216.34					

<p><b>Wood (Clean)</b> - R3: Recycling or reclamation of organic substances which are not used as solvents R13: Storage of wastes pending the operation numbered R3</p>	<b>15 01 03</b>	0					
<p><b>Wood (Clean) (Skip)</b> - R3: Recycling or reclamation of organic substances which are not used as solvents R13: Storage of wastes pending the operation numbered R3</p>	<b>15 01 03</b>	0					
<p><b>Wood (Forestry)</b> - R3: Recycling or reclamation of organic substances which are not used as solvents R13: Storage of wastes pending the operation numbered R3</p>	<b>02 01 07</b>	0					
<p><b>Wood (Forestry) (Skip)</b> - R3: Recycling or reclamation of organic substances which are not used as solvents R13: Storage of wastes pending the operation numbered R3</p>	<b>02 01 07</b>	0					
<p><b>Wooden Packaging</b> - R3: Recycling or reclamation of organic substances which are not used as solvents R13: Storage of wastes pending the operation numbered R3</p>	<b>15 01 03</b>	77.98					
<p><b>Wooden Packaging (Skip)</b> - R3: Recycling or reclamation of organic substances which are not used as solvents R13: Storage of wastes pending the operation numbered R3</p>	<b>15 01 03</b>	0					

**Table 3 – Material processed, reported as a percentage of the annual outgoing material (%), per waste hierarchy category**

Waste hierarchy category Annual	Tonnage	%
Reuse	52.69	0.7%
Repair	0	0.0%
Recycle	3152.78	40.6%
Energy recovery	4530.02	58.4%
Landfill cover	7.88	0.1%
Disposal	18.40	0.2%

## Appendix

**Rheidol Recycling Park Environmental Waste Permit (QP3198FU)**

**Aberystwyth Civic Amenity Site Environmental Waste Permit (NP3998FA)**

### Permit

The Environmental Permitting (England and Wales) Regulations 2010

**Permit number**

**EPR/QP3198FU**

This is the consolidated permit referred to in the variation and consolidation notice for application EPR/QP3198FU authorising,

The Natural Resources Body for Wales (“Natural Resources Wales”) authorises, under regulation 13 of the Environmental Permitting (England and Wales) Regulations 2010

**C. B. Environmental Limited** (“the operator”),

whose registered office is

**Cwmnant Yard Capel Bangor  
Aberystwyth  
Ceredigion  
SY23 3LL**

company registration number **03553364**

to operate waste operations at

**Rheidol Recycling Park  
Glanyrafon Industrial Estate  
Llanbadarn Fawr  
Aberystwyth  
SY23 3JQ**

to the extent authorised by and subject to the conditions of this permit.

Name

Date

**Holly Noble**

**18/12/14**

Authorised on behalf of Natural Resources Wales

# Permit

The Environmental Permitting (England and Wales) Regulations 2010

**Permit number**  
**EPR/NP3998FA**

The Natural Resources Body for Wales ("Natural Resources Wales") authorises, under regulation 13 of the Environmental Permitting (England and Wales) Regulations 2010

**C.B. Environmental Ltd** ("the operator"),

whose registered office is

**Cwmnant Yard**

**Capel Bangor**

**Aberystwyth**

**Ceredigion**

**SY23 3LL**

company registration number **03553364**

to operate waste operations at

**Glan Yr Afon Civic Amenity Site**

**Glan Yr Afon Industrial Estate**

**Llanbadarn Fawr**

**Aberystwyth**

**SY23 3JQ**

to the extent authorised by and subject to the conditions of this permit.

Name	Date
<b>Emily Roe</b>	<b>22/07/2016</b>

Authorised on behalf of Natural Resources Wales